

# SitaWare Maritime

Enhanced situational awareness and C4ISR for the naval commander.



#### Experience a future proof C4ISR solution

The superior Command and Control, AI-powered solution for national headquarters, commanders of task groups, ships and individual units.



#### Fuse multidomain operational activity

Experience the ability to view the RMP, COP and RAP simultaneously for command decision making at sea, in HQs or both.



#### Enable enhanced situational awareness

Advanced C4ISR capabilities present a detailed Recognised Maritime Picture (RMP), which provides commanders with critical and timely decision-support.



#### Trust an operationally proven solution

SitaWare has 25+ years of operational C2 success. Its proven capabilities have been deployed across the maritime domain in a wide range of missions.



#### Ensure collaborative planning across all domains

Developed specifically for the maritime commander, SitaWare Maritime is a force multiplier that allows the seamless coordination of plans and orders.



#### Operate seamlessly with partners and allies

Out-of-the-box integrations enable seamless coordination with air and land commands, coalition partners, coastguard as well as other military or civilian partners.

**SYSTEMATIC**

**SitaWare** Maritime lays a strong foundation for operational success by addressing future requirements today. Regular updates ensure advanced **C4ISR** capabilities, making SitaWare the **Battle Management System** of the future.

*"We now have a fully joint common operating picture across all three forces, which is really powerful. With one single situational awareness platform information-sharing and interoperability is seamless."*

**Brian Matthews**  
Commander, DFI

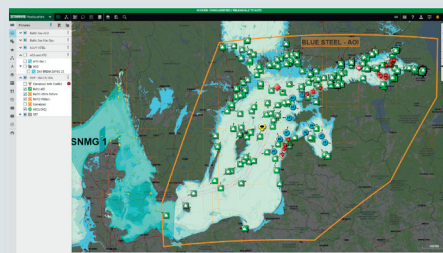


### Littoral Operations

Ship to shore maneuvers demand a robust command structure, where effective planning and coordination are crucial. SitaWare Maritime significantly enhances situational awareness and delivers superior planning whilst safeguarding operational success.

### AI-Enabled Software

Built-in AI provides a coherent overview of tracks from various sources, fusing them in near real-time. Anomaly detection flags possible threats and illegal activity early, providing automatic notifications of abnormal behaviours.




Do you want to **learn more?**



Find out more about how **SitaWare** Maritime can **future proof** your Naval fleet.

You can reach out to us here:

 [more.info@systematic.com](mailto:more.info@systematic.com)

 Tel: +45 8943 2000

**SYSTEMATIC**