

What's new

in SitaWare Frontline and SitaWare Edge 3.2



The operational advantage for the mounted commander

Optimised for integration with vehicle-borne sensors and sub-systems, SitaWare Frontline is a force multiplier for the mounted commander.



Shortens the OODA loop

A clear picture of the battlespace and an intuitive user interface enables commanders to outmanoeuvre the enemy and shorten the command cycle.



Comprehensive situational awareness and mission management

Featuring mapping options and geo tools, SitaWare Frontline and SitaWare Edge bring advanced C2 capabilities to the tactical level.



Robust communications in the most challenging conditions

SitaWare Frontline and Edge shares vital information across the battlespace, improving speed of manoeuvre.



A fully integrated software suite

The SitaWare suite offers a streamlined look-and-feel across all levels of the battlespace, ensuring an easy transition between applications.



Customised and expanded capabilities

SitaWare Frontline and SitaWare Edge offer the stability of off-the-shelf products combined with the flexibility of integrating external applications.

Introducing version 3.2

SitaWare Frontline and SitaWare Edge offers comprehensive situational awareness and unmatched tactical communications for the mounted and dismounted commanders. With the 3.2 release, the solutions help speed up the OODA loop even further.

Platform-agnostic battle management

With the 3.2 release of SitaWare Frontline and SitaWare Edge, Systematic's mobile battle management software is brought to the next level. The new version provides commanders with all the advantages of SitaWare, accessible from their portable devices, including comprehensive situational awareness and mission management, robust communications in the most challenging conditions, and a fully integrated software suite. For users, switching between products in the SitaWare suite becomes effortless with recognisable interfaces, similar functionalities, and easy interaction.

The new release includes a range of improvements, furthering the commander's ability to dominate the battlefield:

SitaWare HF Communication Add-on Module

The HF Communication add-on allows users to control which data is transmitted when using HF radios or SATCOM.

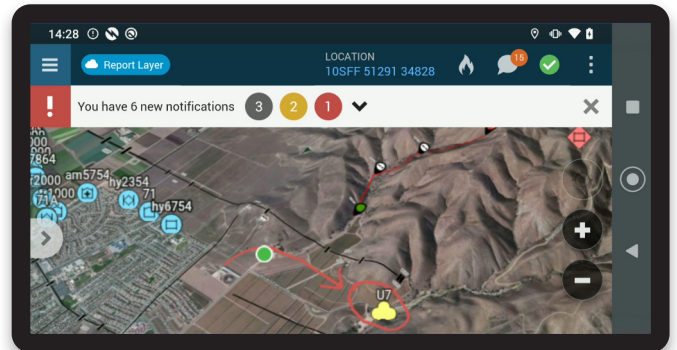
The HF Communication add-on enables the user to send and receive mission information, including:

- Own position
- Chat messages including attachments
- Friendly Force Tracks and snapshot of the situational picture

to and from another SitaWare Frontline or SitaWare Edge device with the HF Communication add-on installed. The add-on functionality requires an additional license.

SitaWare Map Maker

In previous versions of SitaWare Frontline and SitaWare Edge, the preferred way of providing maps has been through SitaWare Headquarters. Using SitaWare Headquarters, maps



generated for SitaWare Frontline and SitaWare Edge could be optimised for performance and in advance be projected to the best suited geographic reference system or projection.

In order to meet the needs of both users on the battlefield as well as administrators preparing the deployment of the software, a new tool, the SitaWare Map Maker, is provided as part of the software. SitaWare Map Maker allow SitaWare Frontline users to generate maps on the fly that are optimised for performance and display in SitaWare Frontline and SitaWare Edge 3 devices.

Significant improvements to SitaWare Edge

With the 3.2 release, SitaWare Frontline is now feature complete with SitaWare Frontline 2.5. In SitaWare Edge, the number of available features has increased, providing the dismounted commander with access to the same vital tools and options as the mounted commander.

Unleash the full potential of your SitaWare solution

SitaWare Aspire is the new hands-on training platform for the SitaWare suite. With new courses introduced with every release, the digital training platform gives you the best foundation for making the most of your SitaWare solution.

Being easy to implement and use, SitaWare Aspire enables you to train multiple users efficiently and at their convenience. It reduces the need for coordination and travel, and with its flexible and scalable setup you can tailor and expand the platform as your requirements develop.

All SitaWare Aspire courses are developed and validated by domain experts to ensure that each lesson accurately reflects workflows. All to give you the most realistic and relevant training of the highest quality.

SitaWare Aspire offers a fully functional SitaWare Frontline fundamental training with additional courses to come.

Contact your local Systematic partner for more information.